

### GEZE 2000 DOOR CLOSERS

The GEZE 2000 door closer is an adjustable strength hydraulic door closer.

#### GEZE TS 2000NV

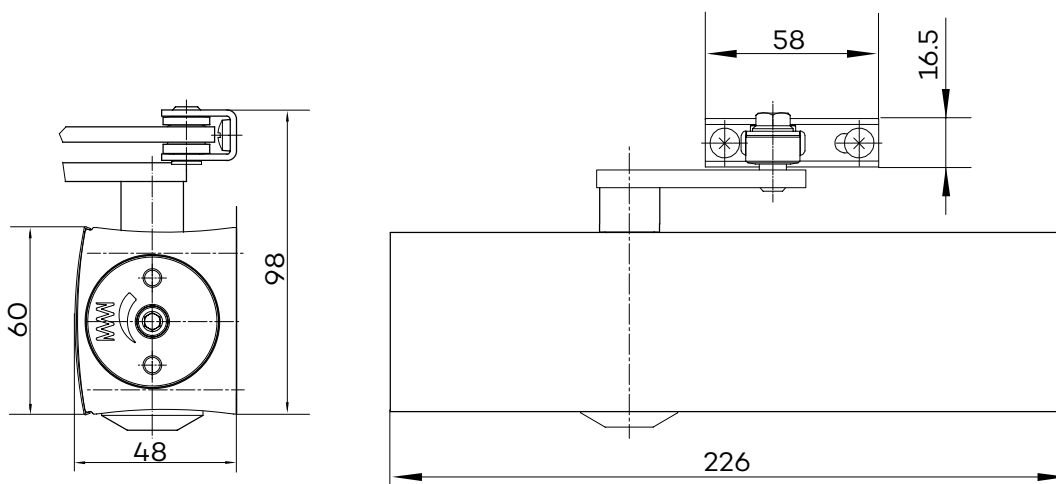
**Link arm door closer for single-leaf doors with a leaf width of up to 1100mm.**

TS 2000NV overhead door closer is approved for use with left-hand and right-hand single-action doors with leaf widths of up to 1100mm (without the need for conversion) and for use on fire and smoke protection doors.

The closing force in accordance with DIN EN 1154 size 2-4 can be variably adjusted at the side. The closing speed and latching action can be conveniently adjusted from the front.

#### Special versions:

- GEZE TS 2000 N V BC with hydraulic back check that can be adjusted from the front
- GEZE TS 2000 V (with hold-open linkage) with adjustable hold-open angle of between 70° and 150°



### GEZE TS 2000NV

#### Applications

- For single action doors, leaf width of up to 1100mm
- For right and left hung doors without the need for conversion
- For Fire Protection doors (doors closers with mounting plate)
- Standard installation on door leaf hinge side; transom installation on opposite hinge side also possible
- Can be installed on door on opposite hinge side with parallel arm mounting

#### Technical data

Product features	GEZE TS 2000 NV closer	GEZE TS 2000 NV BC closer
Closing force in accordance with EN 1154		2 - 4
Leaf width recommended up to		1100 mm
Same version for DIN left and DIN right	●	●
Product tested in accordance with	Door closer tested in accordance with EN 1154	
Suitable for fire protection doors	●	●
Mounting plate with hole pattern acc. to EN 1154 Supplement 1	●	●
Length		226 mm
Installation depth		48 mm
Height		60 mm

#### Functions

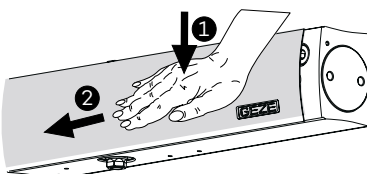
Adjustable closing force		with variable adjustment
Adjustable closing speed	●	●
Adjustable latching action		via valve
Integrated back check	○	Yes, hydraulically adjustable
Closing force adjustment position		On the side
Thermo-constant valves	●	●

○ = no

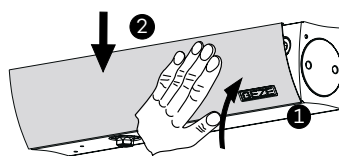
● = yes

#### Recommended settings for GEZE door closers

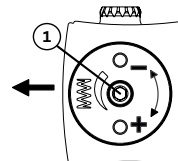
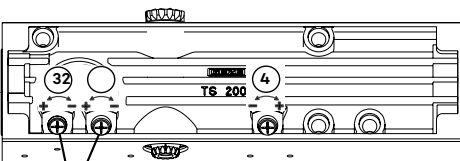
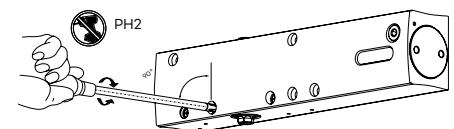
X Remove slide plate



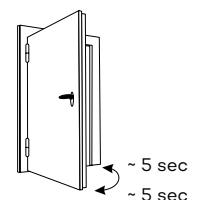
X Clip slide plate open



X Set



Setting	Leaf width [mm]
Door closer size	
Buffer -	up to 850
4 revolutions	850 - 950
Buffer +	up to 1100



- 1 Door closer size
- 2 Closing speed
- 3 Latching action
- 4 Back check (only with TS 2000 NV BC)

Light-running door must be closed completely by the closer!

### NOVAS DOOR CONTROLS

GEZE Hydraulic door closers are designed to suit various residential and commercial applications. By definition, door closers are used to close hinged leaf doors after they have been manually opened. The smooth closing operation is controlled by the adjustable hydraulic rack and pinion mechanism.

In choosing a closer style for a particular application consideration should be given to the type of door being controlled, frame condition, aesthetic and the control features required by the end user.

The size and weight of the door is the main consideration in selecting a closer of the correct strength. Recommended door widths for each closer assume normal operating conditions. If a door is of exceptional height, weight, special construction, or if air pressure differentials exist, a more powerful closer should be considered.

A door closer effectively increases the loading on door hinges and their rate of wear. It is recommended that any door fitted with a door closer should use three or more Novas Ball Bearing/Sintered Bearing Hinges.

It is essential that the door be clear in the door frame and when fitted with a lock the latch bolt must engage freely with the strike.

Floor or wall mounted doorstops should be fitted to prevent possible damage to the door frame and fitted hardware.

#### **Services**

Novas offers a fully comprehensive (free of charge) specification/door scheduling service to meet project requirements. Door schedules are prepared by our scheduling team who are all design and/or industry trained professionals. Please contact your local Novas representative for assistance.

#### **Guarantee**

Novas guarantee all their products against defects in workmanship and materials subject to inspection and confirmation of fair wear and tear within the normal working life of the product.

Novas assumes no liability for:

1. Improper installation or failure to follow fitting instructions.
2. Product failure due to improper maintenance or unfair wear and tear.
3. Indirect or consequential loss or damage.
4. Cost of removal and/or replacement.
5. Cost of freight and/or travelling expenses.
6. Some plated finishes are classified as soft finishes. Deterioration is possible under some climatic conditions and cannot be unconditionally guaranteed.

Contact your local Novas representative or agent for advice on all finishes.

