

NOVAS

GEZE 4000 DOOR CLOSERS

The GEZE 4000 door closer is a adjustable strength hydraulic door closer. Applications include regular arm, parallel arm, top jamb, track arm and adjustable back check function. Also available in size 5-7 whereas leaf width up to 1600mm.

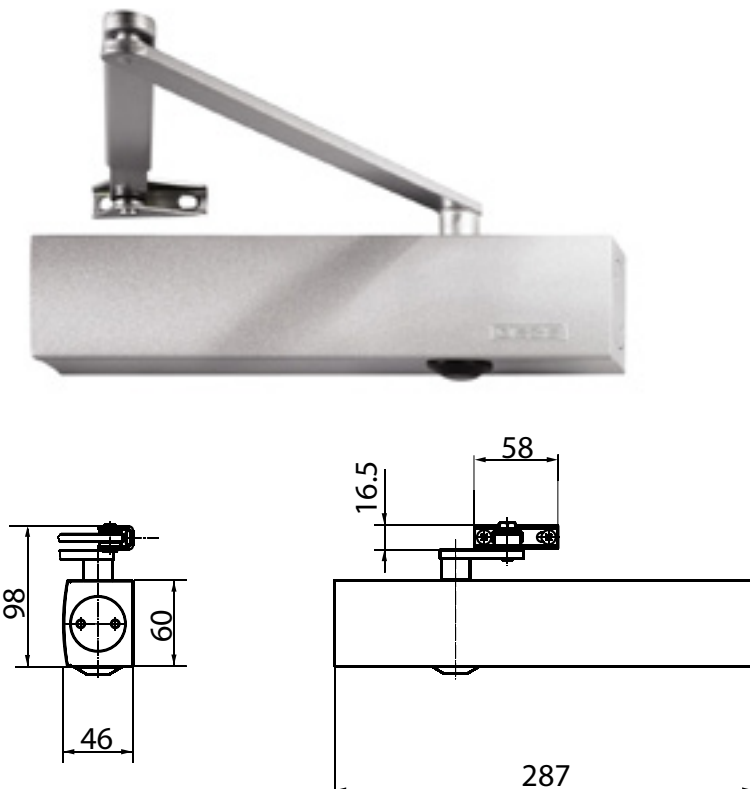
GEZE TS 4000

Link arm door closer for single-leaf doors with a leaf width up to 1400mm.

TS 4000 overhead door closer is approved for use with left and right single-action doors with leaf widths up to 1400 mm (without any need for conversion) and for mounting on fire and smoke doors. The closing force to EN 1154 size 1-6 is infinitely variable from the front and is easy to monitor thanks to the optical size indicator. The back check and thermo-constant closing speed are also adjustable from the front; the latching action is adjusted by means of the link arm. The closer features a safety valve for both the open and close directions.

Special versions:

- GEZE TS 4000 with hold-open linkage hold-open angle up to 150° (must not be used on fire and smoke doors)
- GEZE TS 4000 S with delayed closing action of up to 30 seconds, adjustable from the front (delayed closing action not effective with transom mounting on opposite hinge side).
- GEZE TS 4000 door closer, wet room version same as TS 4000, but with specially nickel-plated spindle, bearing shells and stainless steel screw accessories for aggressive environments.



NOVAS

GEZE TS 4000

Applications

- For single-action doors, leaf width up to 1400mm.
- Compatible with left-hand and right-hand doors without the need for conversion.
- For fire and smoke doors (door closers with mounting plate).
- Standard mounting on door leaf, hinge side; transom mounting on opposite hinge side also possible.
- Can be installed on door leaf on opposite hinge side with parallel arm mounting.

Technical data

Closer specifications

Product features	GEZE TS 4000 closer	GEZE TS 4000 S closer
Closing force to EN 1154	1 - 6	
Leaf width recommended up to	1400 mm	
Identical version DIN-L and DIN-R	●	●
Product tested in acc. with	Door closer tested in acc. with EN 1154	
Suitable for fire and smoke doors	●	●
Mounting plate with hole pattern acc. to EN 1154 Supplement 1	●	●
Length	287 mm	
Installation depth	46 mm	
Height	60 mm	

Functions

Adjustable closing force	● Infinitely variable	
Adjustable closing speed	●	●
Adjustable latching action	● Via link arm	● Via valve
Integrated back check	● Hydraulically adjustable	
Integrated delayed closing action		●
Closing force adjustment position	Front	
Optical closing force display	●	●
Safety valve featuring protection against vandalism	●	●
Thermo-constant valves	●	●

● = yes

○ = no

Also available in size 5-7, For single-action doors, leaf width up to 1600 mm

Closer specifications

Product features	GEZE TS 4000 closer
Closing force to EN 1154	5 - 7
Leaf width recommended up to	1600 mm
Identical version DIN-L and DIN-R	●
Product tested in acc. with	Door closer tested in acc. with EN 1154
Suitable for fire and smoke doors	●
Mounting plate with hole pattern acc. to EN 1154 Supplement 1	●
Length	287 mm
Installation depth	46 mm
Height	60 mm

Continued overleaf



NOVAS

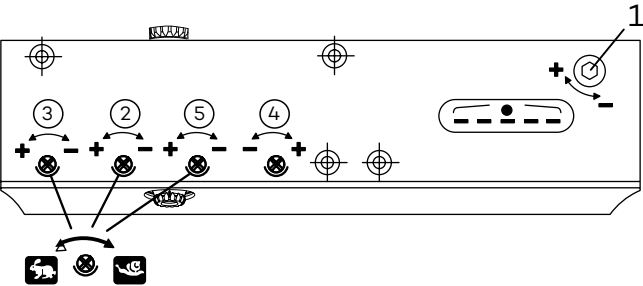
GEZE TS 4000

Continued

Functions	
Adjustable closing force	● Infinitely variable
Adjustable closing speed	●
Adjustable latching action	● Via link arm
Integrated back check	● Hydraulically adjustable
Closing force adjustment position	Front
Optical closing force display	●
Safety valve featuring protection against vandalism	●
Thermo-constant valves	●

● = yes
○ = no

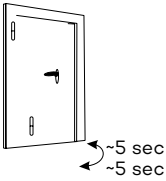
Recommended settings for GEZE door closers



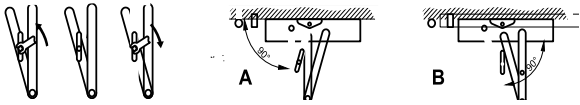
- 1 Door closer size
- 2 Closing speed
- 3 Latching action (only with TS
- 4 4000 S) Back check
- 5 Delayed closing action (only with TS 4000 S)

Display Door closer size	Leaf width [mm]
1	up to 750
2	750 - 850
3	850 - 950
4	950 - 1100
5	1100 - 1250
6	1250 - 1400

Light-running door must be closed completely by the closer!



Setting	with latching action	without latching action
---------	----------------------	-------------------------



NOVAS

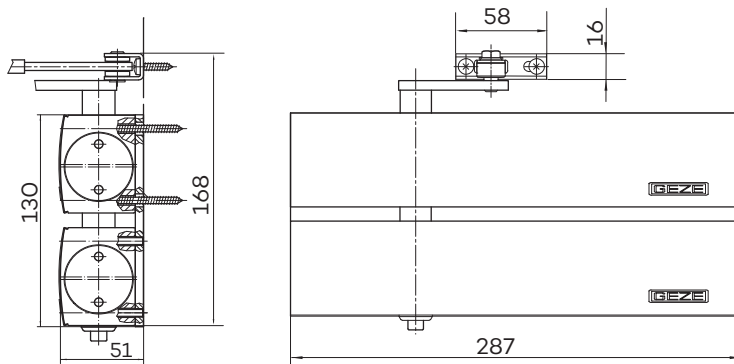
GEZE 4000 DOOR CLOSERS

The GEZE 4000 door closer is an adjustable strength hydraulic door closer. Applications include regular arm, parallel arm, top jamb, track arm and adjustable back check function. Also available in size 5-7 whereas leaf width up to 1600mm.

GEZE TS 4000 Tandem

Link arm door closer for single-leaf doors/gates with leaf widths greater than 1600 mm or extremely heavy

Combination of a TS 4000 EN 5-7 and a TS 4000 EN 1-6 on an adapter plate with a shared spindle. Closing force > EN 7, for use with extremely large and heavy doors or gates. The individual products have been tested in accordance with the EN 1154 standard.



GEZE TS 4000 Tandem

Applications

- For single-action doors, leaf width > 1600 mm
- Compatible with left-hand and right-hand doors (conversion required)
- For fire and smoke doors (door closers with mounting plate).
- Standard mounting on door leaf, hinge side; transom mounting on opposite hinge side also possible.
- Can be installed on door leaf on opposite hinge side with parallel arm mounting.

Technical data**Closer specifications**

Product features	GEZE TS 4000 tandem complete package
Same version for DIN left and DIN right	●
Product tested in accordance with	Door closer tested in accordance with EN 1154
Suitable for fire protection doors	●
Mounting plate with hole pattern acc. to EN 1154 Supplement 1	●
Length	287 mm
Installation depth	51 mm
Height	130 mm
Functions	
Adjustable closing force	with variable adjustment
Adjustable closing speed	●
Adjustable latching action	via link arm
Integrated back check	hydraulically adjustable
Closing force adjustment position	Front
Visual closing force display	●
Safety valve as protection against vandalism	●
Thermo-constant valves	●

- = yes
= no

NOVAS

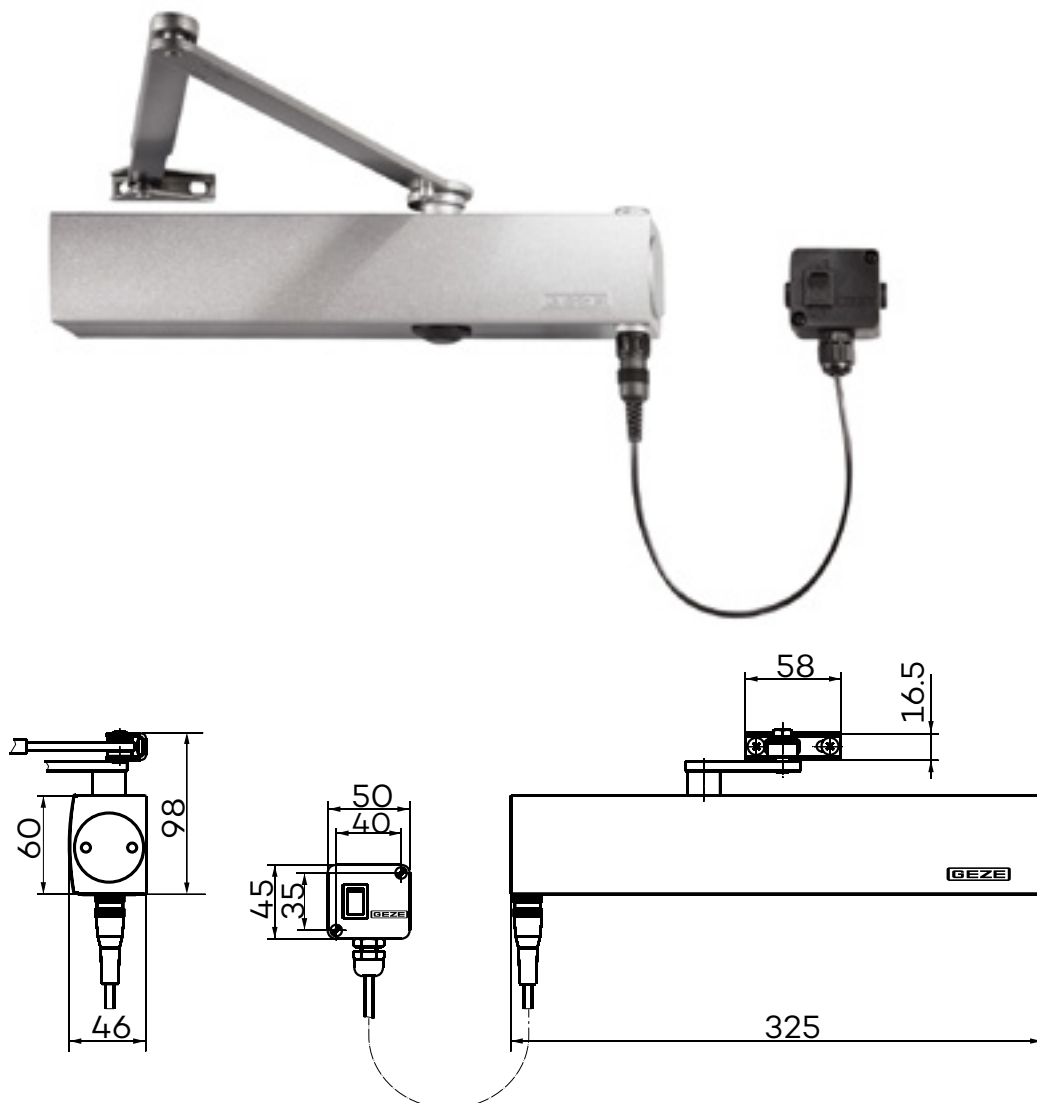
GEZE 4000E DOOR CLOSERS

TS 4000 E (24 V DC) overhead door closer, featuring an electric hold-open that is infinitely variable between 80° and 175° in accordance with EN 1155, is approved for use with left and right single-action doors with a door leaf width up to 1400mm and for mounting on fire and smoke doors. In the event of a fire or power failure, the hold-open mechanism is activated and the door closes securely. The size 1-6 closing force to EN 1154, with optical size indicator, and the thermo constant closing speed can be conveniently adjusted from the front; the latching action is adjusted by means of the link arm.

GEZE TS 4000E

Special versions:

- GEZE TS 4000 E/transom mounting on opposite hinge side 24V DC.



NOVAS

GEZE TS 4000E

Applications

- For single-action doors, leaf width up to 1400mm.
- Compatible with left-hand and right-hand doors without the need for conversion.
- For fire and smoke doors (door closers with mounting plate).
- Standard mounting on door leaf, hinge side; transom mounting on opposite hinge side also possible.
- Transom mounting on hinge side possible with guide rail, closing force EN3, not approved for fire and smoke doors.

Technical data

Product features	GEZE TS 4000 E closer
Closing force to EN 1154	1 - 6
Leaf width recommended up to	1400 mm
Identical version DIN-L and DIN-R	●
Supply voltage	24 V DC
Enclosure rating IP	IP 43
Product tested in acc. with	Door closer tested in acc. with EN 1154 Hold-open mechanism tested in acc. with EN 1155
Suitable for fire and smoke doors	●
Mounting plate with hole pattern acc. to EN 1154 Supplement 1	●
Length	325 mm
Installation depth	46 mm
Height	60 mm
Functions	
Adjustable closing force	● Infinitely variable
Adjustable closing speed	●
Adjustable latching action	● Via link arm
Integrated back check	●
Closing force adjustment position	Front
Optical closing force display	●
Safety valve featuring protection against vandalism	●
Thermo-constant valves	●
Integrated hold-open mechanism	Electric
Hold-open angle	80°-175°
Hold-open mechanism can be overridden	●

● = yes

○ = no

NOVAS

GEZE 4000EFS DOOR CLOSERS

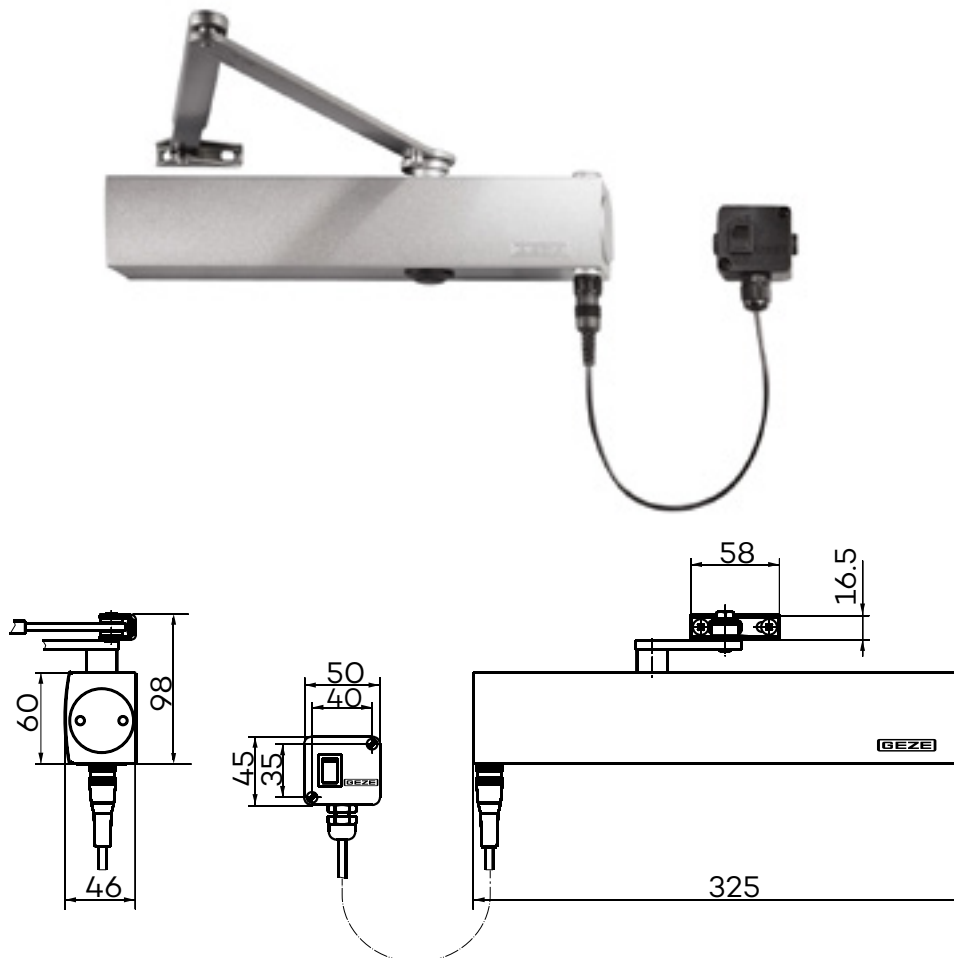
TS 4000 EFS (24 V DC) overhead door closer for single-leaf doors features what is known as a “freeswing” function. After the freeswing function has been activated by opening the door once by an angle of approximately 90° (e.g. in the morning), users can pass through the door in either direction without having to press very hard on the door at all. This function is particularly useful in retirement homes or hospitals, for example. TS 4000 EFS features an electric hold-open that is infinitely variable between 80° and 180° in accordance with EN 1155 to support the freeswing function. It is approved for use with left and right single-action doors with a door leaf width up to 1400 mm and for mounting on fire and smoke doors. The size 1-6 closing force to EN 1154, with optical size indicator, and the thermoconstant closing speed can be conveniently adjusted from the front; the latching action is adjusted by means of the link arm.

Please note: Due to the guideline of hold-open systems of the DIBt (German Institution for Construction Technology) a circuit breaker is imperatively stipulated when using a door closer with freeswing function.

GEZE TS 4000EFS

Special versions:

- GEZE TS 4000 EFS/transom mounting on opposite hinge side 24V DC.



NOVAS

GEZE TS 4000EFS

Applications

- For single-action doors, leaf width up to 1400mm.
- Compatible with left-hand and right-hand doors without the need for conversion.
- For fire and smoke doors (door closers with mounting plate).
- Standard mounting on door leaf, hinge side; transom mounting on opposite hinge side also possible.
- Transom mounting on hinge side possible with guide rail, closing force EN3, not approved for fire and smoke doors.

Technical data

Product features	GEZE TS 4000 EFS closer
Closing force to EN 1154	1 - 6
Leaf width recommended up to	1400 mm
Identical version DIN-L and DIN-R	●
Supply voltage	24 V DC
Enclosure rating IP	IP 43
Product tested in acc. with	Door closer tested in acc. with EN 1154 Hold-open mechanism tested in acc. with EN 1155
Suitable for fire and smoke doors	●
Mounting plate with hole pattern acc. to EN 1154 Supplement 1	●
Length	325 mm
Installation depth	46 mm
Height	60 mm
Functions	
Adjustable closing force	● Infinitely variable
Adjustable closing speed	●
Adjustable latching action	● Via link arm
Integrated back check	○
Closing force adjustment position	Front
Optical closing force display	●
Safety valve featuring protection against vandalism	●
Thermo-constant valves	●
Integrated hold-open mechanism	Electric
Freeswing range	80°-175°

● = yes

○ = no

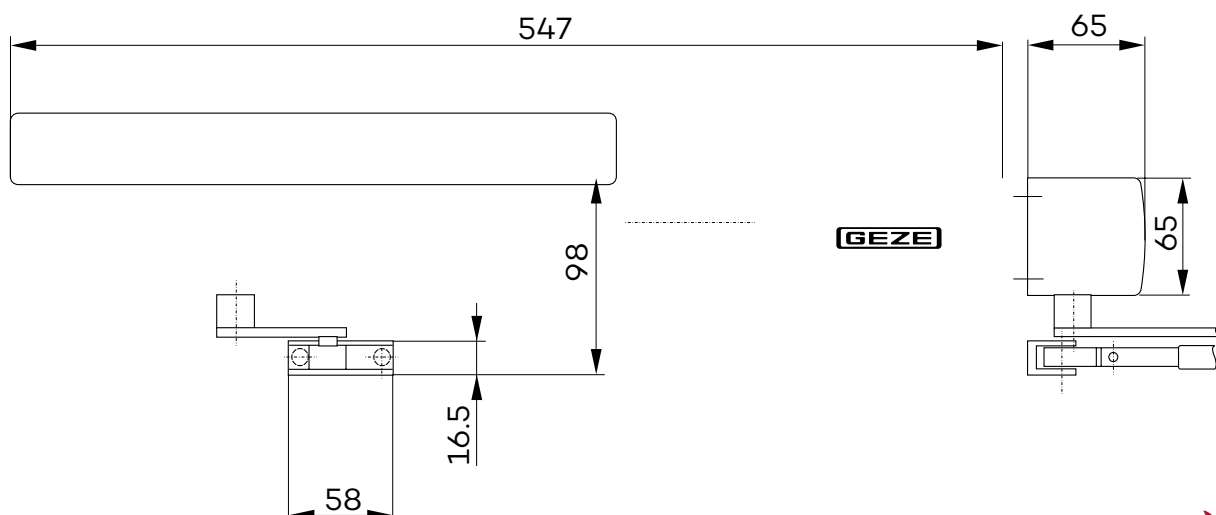
NOVAS

GEZE 4000R DOOR CLOSERS

TS 4000 R overhead door closer, featuring an electric hold-open that is infinitely variable between 80° and 175° in accordance with EN 1155 and a smoke switch control unit built into the closer cover, is approved for use with left and right single-action doors with a door leaf width up to 1400mm and for mounting on fire and smoke doors. In the event of a fire, the smoke detector is activated and the door closes automatically.

The size 1-6 closing force to EN 1154, with optical size indicator, and the thermoconstant closing speed can be conveniently adjusted from the front; the latching action is adjusted by means of the link arm. Official building approval of a general nature from the DIBt (German Institute for Building Technology) (not applicable to transom mounting on the hinge side).

GEZE TS 4000R



NOVAS

GEZE TS 4000R

Applications

- For single-action doors, leaf width up to 1400mm.
- Compatible with left-hand and right-hand doors without the need for conversion.
- For fire and smoke doors (door closers with mounting plate).
- Standard mounting involving transom mounting on opposite hinge side.
- Transom mounting on hinge side possible with free swing guide rail, closing force EN3, not approved for fire and smoke doors.

Technical data

Product features	GEZE TS 4000 RFS KM BG closer
Closing force to EN 1154	1 - 6
Leaf width recommended up to	1400 mm
Identical version DIN-L and DIN-R	●
Supply voltage	230 V 50 Hz
Enclosure rating IP	I P 20
Product tested in acc. with	Door closer tested in acc. with EN 1154 Hold-open mechanism tested in acc. with EN 1155 Official building approval of a general nature from the DIBt (German Institute for Building Technology) for use as a hold-open system
Suitable for fire and smoke doors	●
Mounting plate with hole pattern acc. to EN 1154 Supplement 1	●
Length	547 mm
Installation depth	65 mm
Height	65 mm
Functions	
Adjustable closing force	● Infinitely variable
Adjustable closing speed	●
Adjustable latching action	Via link arm
Integrated back check	○
Closing force adjustment position	Front
Optical closing force display	●
Safety valve featuring protection against vandalism	●
Thermo-constant valves	●
Integrated hold-open mechanism	Electric
Integrated smoke switch	●
With visual status display	●
With soiling indicator	●
With adaption of the alarm threshold	●
Integrated power supply unit	●

● = yes

○ = no

NOVAS

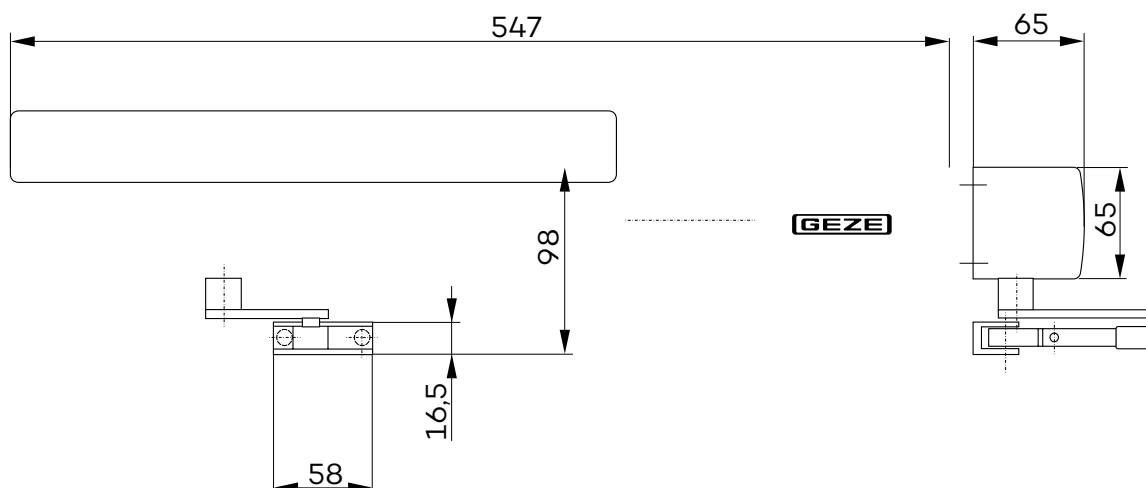
GEZE 4000RFS DOOR CLOSERS

TS 4000 RFS overhead door closer for single-leaf doors features what is known as a “free swing” function. After the free swing function has been activated by opening the door once by an angle of approximately 90° (e.g in the morning), users can pass through the door in either direction without having to press very hard on the door at all. This function is particularly useful in retirement homes or hospitals, for example.

TS 4000 RFS features an infinitely variable electric hold-open in accordance with EN 1155 and a smoke switch control unit built into the closer cover. It is approved for use with left and right single-action doors with a door leaf width up to 1400 mm and for mounting on fire and smoke doors. The size 1-6 closing force to EN 1154, with optical size indicator, and the thermo-constant closing speed can be conveniently adjusted from the front; the latching action is adjusted by means of the link arm. The product has been granted official building approval of a general nature by the DIBT (German Institute for Building Technology) (EN 1155 and DIBT approval not applicable to transom mounting on the hinge side).

Please note: Due to the guideline of hold-open systems of the DIBT (German Institution for Construction Technology) a circuit breaker is imperatively stipulated when using a door closer with free swing function.

GEZE TS 4000RFS



NOVAS

GEZE TS 4000RFS

Applications

- For single-action doors, leaf width up to 1400mm.
- Compatible with left-hand and right-hand doors without the need for conversion.
- For fire and smoke doors (door closers with mounting plate).
- Standard mounting involving transom mounting on opposite hinge side.
- Transom mounting on hinge side possible with free swing guide rail, closing force EN3, not approved for fire and smoke doors.

Technical data

Product features	GEZE TS 4000 RFS KM BG closer
Closing force to EN 1154	1 - 6
Leaf width recommended up to	1400 mm
Identical version DIN-L and DIN-R	●
Supply voltage	230 V 50 Hz
Enclosure rating IP	I P 20
Product tested in acc. with	Door closer tested in acc. with EN 1154 Hold-open mechanism tested in acc. with EN 1155 Official building approval of a general nature from the DIBt (German Institute for Building Technology) for use as a hold-open system
Suitable for fire and smoke doors	●
Mounting plate with hole pattern acc. to EN 1154 Supplement 1	●
Length	547 mm
Installation depth	65 mm
Height	65 mm
Functions	
Adjustable closing force	● Infinitely variable
Adjustable closing speed	●
Adjustable latching action	● Via link arm
Integrated back check	○
Closing force adjustment position	Front
Optical closing force display	●
Safety valve featuring protection against vandalism	●
Thermo-constant valves	●
Integrated hold-open mechanism	Electric
Integrated smoke switch	●
With visual status display	●
With soiling indicator	●
With adaption of the alarm threshold	●
Integrated power supply unit	●
Freeswing range	80°-175°

● = yes

○ = no

NOVAS

NOVAS DOOR CONTROLS

GEZE Hydraulic door closers are designed to suit various residential and commercial applications. By definition, door closers are used to close hinged leaf doors after they have been manually opened. The smooth closing operation is controlled by the adjustable hydraulic rack and pinion mechanism.

In choosing a closer style for a particular application consideration should be given to the type of door being controlled, frame condition, aesthetic and the control features required by the end user.

The size and weight of the door is the main consideration in selecting a closer of the correct strength. Recommended door widths for each closer assume normal operating conditions. If a door is of exceptional height, weight, special construction, or if air pressure differentials exist, a more powerful closer should be considered.

A door closer effectively increases the loading on door hinges and their rate of wear. It is recommended that any door fitted with a door closer should use three or more Novas Ball Bearing/Sintered Bearing Hinges.

It is essential that the door be clear in the door frame and when fitted with a lock the latch bolt must engage freely with the strike.

Floor or wall mounted doorstops should be fitted to prevent possible damage to the door frame and fitted hardware.

Services

Novas offers a fully comprehensive (free of charge) specification/door scheduling service to meet project requirements. Door schedules are prepared by our scheduling team who are all design and/or industry trained professionals. Please contact your local Novas representative for assistance.

Guarantee

Novas guarantee all their products against defects in workmanship and materials subject to inspection and confirmation of fair wear and tear within the normal working life of the product.

Novas assumes no liability for:

1. Improper installation or failure to follow fitting instructions.
2. Product failure due to improper maintenance or unfair wear and tear.
3. Indirect or consequential loss or damage.
4. Cost of removal and/or replacement.
5. Cost of freight and/or travelling expenses.
6. Some plated finishes are classified as soft finishes. Deterioration is possible under some climatic conditions and cannot be unconditionally guaranteed.

Contact your local Novas representative or agent for advice on all finishes.

