

NOVAS

GEZE 500 DOOR CLOSERS

Floor springs for 1-leaf single and double action doors up to 1100mm leaf width.

GEZE TS 500NV

Product features:

- Overall height 42mm
- Back check
- Closing force adjustable size 1-4 according to EN1154 (TS 500 NV) Closing force size 3
- Closing speed adjustable
- Latching action adjustable (TS 500 NV)
- Galvanised cement box
- Safety valve preventing deliberate overloading
- Closing range from approx. 1700mm
- Large adjustment range:
 - Height 6mm
 - Lateral 10mm
 - Length 10mm

Cover plates:

Various cover plates with screw accessories are available for GEZE floor springs.

Cover plates can be used for both right and left hand closing single-action doors and for double-action doors.

Pivot lever/guide rail

For the installation of a floor spring for a single-action door a special pivot lever and door rail with a pivot point of 36mm is required.

Standard version/scope of delivery

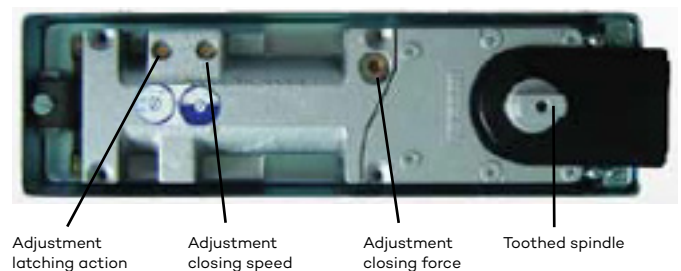
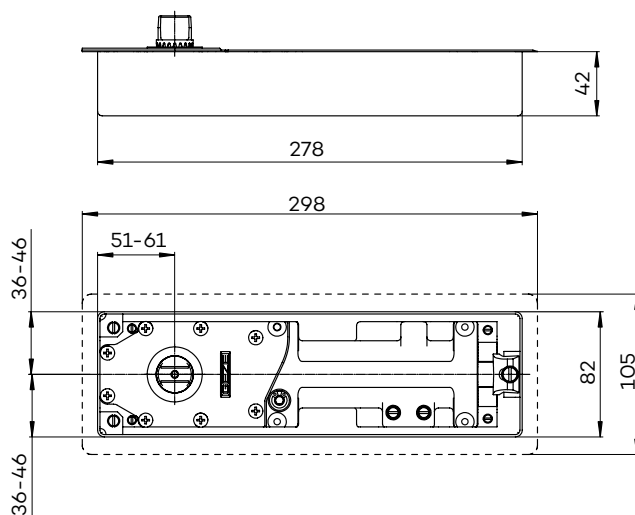
Floor spring complete with flat-tapered spindle, cement box and installation instructions. Without hold-open mechanism (cover plate not included).

Special versions:

- With hold-open mechanism 85°, 90°, 105° and 120°
- With extended spindle up to 50mm (5mm selection)

Application range:

- For right and left hand closing single-action doors
- For internal double-action doors
- For leaf width up to 1100mm
- For leaf weights up to 150kg



NOVAS

GEZE 500 DOOR CLOSERS

Floor springs for 1-leaf single and double action doors up to 1100mm leaf width.

GEZE TS 550NV

Product features:

- Overall height 54mm
- Closing force adjustable size 3-6 according to EN1154 (TS 550 NV)
- Closing force size 4 according to EN 1154 4 (TS 550 N EN4)
- Infinitely variable hydraulic hold-open (80°-165°), can be enabled/disabled
- Delayed closing instead of hold-open is possible
- Closing speed adjustable
- Latching action adjustable
- Fixed back check, integrated
- Safety valve preventing deliberate overloading
- All settings can be adjusted from the top (when installed)
- Galvanised cement box
- Closing range from approx. 170°
- Large adjustment range:
 - Height 6mm
 - Lateral 10mm
 - Length 9mm

Cover plates (1.5mm thick):

Various cover plates with screw accessories are available for GEZE floor springs.

Cover plates can be used for both right and left hand closing single-action doors and for double-action doors.

Pivot lever/guide rail

For the installation of a floor spring for a single-action door a special pivot lever and door rail with a pivot point of 36mm is required.

Application range:

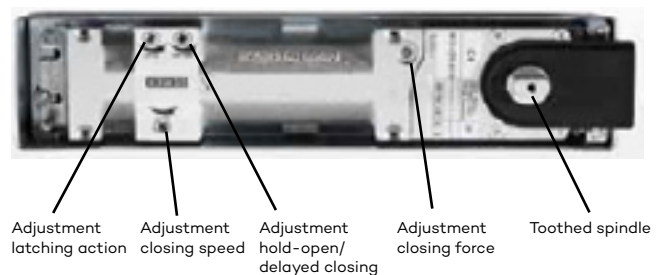
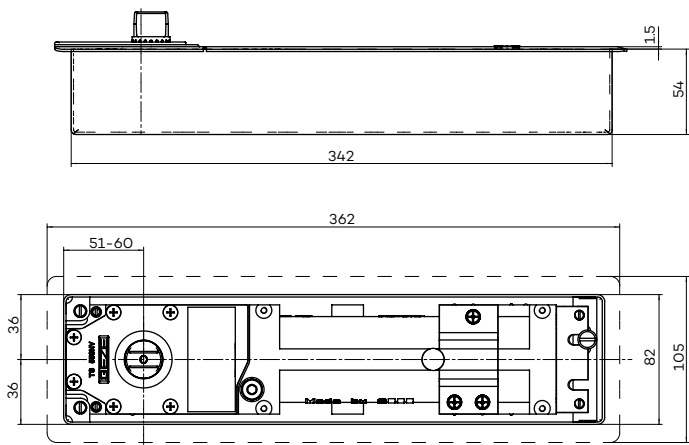
- For highly frequented doors
- For right and left hand closing single-action doors
- For double-action doors
- For leaf width up to 1400mm
- For leaf weights up to 300kg

Special versions:

- With extended spindle up to 50 mm (5 mm selection)

Standard version/scope of delivery

Floor spring complete with flat-tapered spindle, cement box and installation instructions. Without hold-open mechanism (cover plate not included).



NOVAS

GEZE 550 DOOR CLOSERS

Floor springs with electromechanical hold-open for 1-leaf fire and smoke protection doors up to 1400mm leaf width

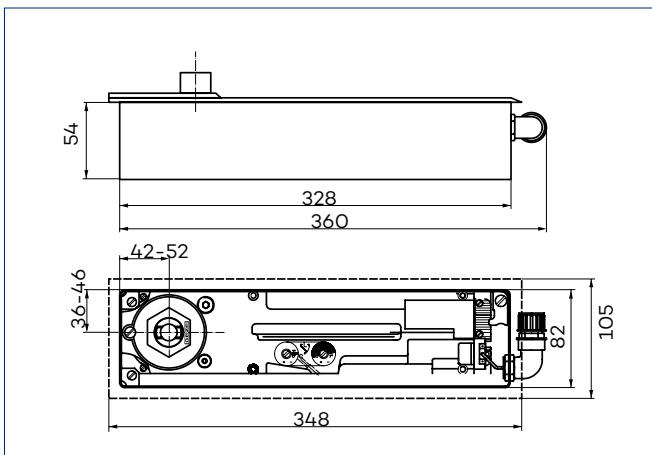
GEZE TS 550 E

Product features:

- According to EN1154 and EN1155
- Closing force adjustable size 3-6
- Infinitely variable hold-open (80° - 175°), can be enabled/disabled
- Variable hold-open time for held-open door
- Closer in only one construction size
- Closing force and latching action adjustable
- Safety valve preventing deliberate overloading
- Closing range from approx. 180°
- Large adjustment range: height 6 mm, lateral 10 mm, length 10 mm
- Galvanised cement box
- Plug-in connection cable (approx. 3 m)
- Approved for recognised smoke detection by the institute of civil engineering (DIBt), Berlin

Standard version/Scope of delivery

Floor spring complete with flat-tapered spindle, cement box and connection cable (cover plate not included)



Application range

- For right and left hand closing single-action doors
- For leaf width up to 1400 mm
- For leaf weights up to 250 kg
- For smoke and fire protection doors with provision for floor springs

The requirement

The standards stipulate that the door closer size (closing force of the closer) must be selected appropriate to the door width. The next highest size must be selected if the structural (door height, door weight) or local conditions (wind influence) make this necessary.

The solution from GEZE

The floor spring TS 550 E covers several door closer sizes in one housing. These sizes can be adjusted using an adjustment screw.



NOVAS

GEZE TS 550 F-G / E-G/IS-G/E-IS-G

Floor springs with lever and guide rail doors with hinges up to 1400 mm width per leaf

GEZE TS 550 F-G

Product features:

- According to EN 1154 A / resp. EN 1155 / resp. EN 1158
- Closing force size 3-6
- Closer in only one construction size
- Closing speed and latching action adjustable
- Safety valve preventing deliberate overloading
- Closing range from approx. 180°
- Large adjustment range:
height 6 mm, lateral 10 mm, length 10 mm
- Galvanised cement box with overall height of 58 mm
- With special cover plate for a floor level clearance of 9 mm



For 1-leaf doors

- GEZE TS 550 F-G without hold-open
- GEZE TS 550 E-G ¹⁾
with electromechanical hold-open, infinitely variable 80°-150° Functional description and electrical installation as for TS 550 E

Application range

- For right and left hand closing
single-action doors ²⁾
- For widths up to 1400 mm per leaf
- For smoke and fire protection doors with provision for floor springs

Closing force	Door leaf width (mm)
Size 3	up to 950
Size 4	over 950 up to 1100
Size 5	over 1100 up to 1250
Size 6	over 1250 up to 1400

For 2-leaf doors

- GEZE TS 550 IS-G
with integrated door selector
- GEZE TS 550 E-IS-G ¹⁾
with integrated door selector
and electromechanical hold-open on both sides,
infinitely variable 80°-150° Functional description and electrical installation as for TS 550 E-IS

The requirement

The standards stipulate that the door closer size (closing force of the closer) must be selected appropriate to the door width. The next highest size must be selected if the structural (door height, door weight) or local conditions (wind influence) make this necessary.

The solution from GEZE

The floor spring TS 550 G and variations covers several door closer sizes in one housing. These sizes can be adjusted using an adjustment screw.

NOVAS

GEZE 550 DOOR CLOSERS

Floor springs with electromechanical hold-open and integrated door selector for 2-leaf fire and smoke protection doors up to 1400mm width per leaf

GEZE TS 550-IS

Product features:

- According to EN1154, EN1155 and EN1158
- Closing force adjustable size 3-6
- Closer in only one construction size
- Infinitely variable hold-open (80° - 175°) independently adjustable, can be enabled/disabled
- Variable hold-open time for held-open door
- Integrated, concealed door selector
- Closing speed and latching action adjustable
- Safety valve preventing deliberate overloading
- Closing range from approx. 180°
- Large adjustment range: height 6 mm, lateral 10 mm, length 10 mm
- Galvanized cement box

Standard version/Scope of delivery

- 1) TS 550 IS fixed leaf
complete with flat-tapered spindle and cement box (cover plate not included)
- 2) TS 550 IS moving leaf
complete with flat-tapered spindle and cement box (cover plate not included)

Application range

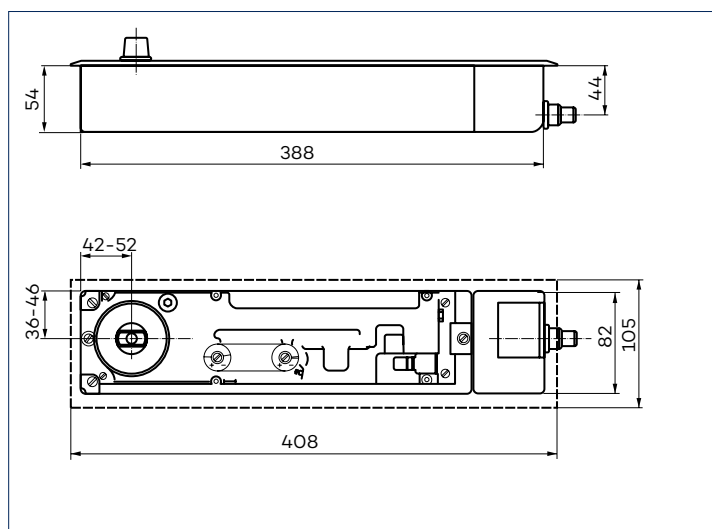
- For right and left hand closing single-action doors
- For widths up to 1400 mm per leaf
- Also suitable for leaves with different widths
- For leaf weights up to 250 kg
- For smoke and fire protection doors with provision for floor springs

The requirement

The standards stipulate that the door closer size (closing force of the closer) must be selected appropriate to the door width. The next highest size must be selected if the structural (door height, door weight) or local conditions (wind influence) make this necessary.

The solution from GEZE

The floor spring TS 550 E-IS covers several door closer sizes in one housing. These sizes can be adjusted using an adjustment screw.



Closing force	Door leaf width (mm)
Size 3	up to 950
Size 4	over 950 up to 1100
Size 5	over 1100 up to 1250
Size 6	over 1250 up to 1400

NOVAS

GEZE 550 DOOR CLOSERS

Floor springs with electromechanical hold-open and integrated door selector for 2-leaf fire and smoke protection doors up to 1400mm width per leaf

GEZE TS 550 E-IS

Product features:

- According to EN1154, EN1155 and EN1158
- Closing force adjustable size 3-6
- Closer in only one construction size
- Infinitely variable hold-open (80° - 175°) independently adjustable, can be enabled/disabled
- Variable hold-open time for held-open door
- Integrated, concealed door selector
- Closing speed and latching action adjustable
- Safety valve preventing deliberate overloading
- Closing range from approx. 180°
- Large adjustment range: height 6 mm, lateral 10 mm, length 10 mm
- Galvanized cement box
- Plug-in connection cable (approx. 3 m)
- Approved for recognized smoke detection by the institute of civil engineering (DIBt), Berlin

Standard version/Scope of delivery

- 1) TS 550 E-IS fixed leaf
complete with flat-tapered spindle, cement box, plug-in connection cable and cable with connector (cover plate not included)

Application range

- For right and left hand closing single-action doors
- For widths up to 1400 mm per leaf
- Also suitable for leaves with different widths
- For leaf weights up to 250 kg
- For smoke and fire protection doors with provision for floor springs

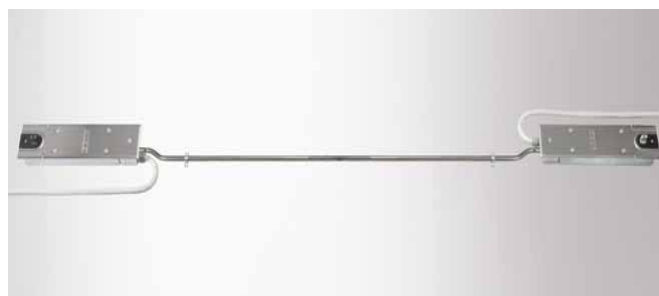
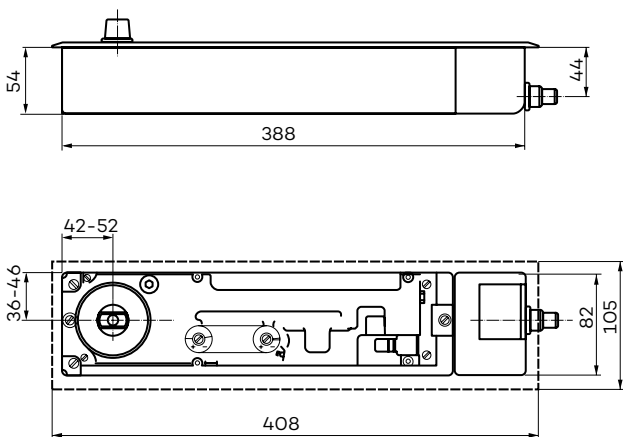
The requirement

The standards stipulate that the door closer size (closing force of the closer) must be selected appropriate to the door width. The next highest size must be selected if the structural (door height, door weight) or local conditions (wind influence) make this necessary.

The solution from GEZE

The floor spring TS 550 E-IS covers several door closer sizes in one housing. These sizes can be adjusted using an adjustment screw.

- 2) TS 550 E-IS moving leaf
complete with flat-tapered spindle, cement box, plug-in connection cable, cable with connector incl. bowden cable (cover plate not included)



Closing force	Door leaf width (mm)
Size 3	up to 950
Size 4	over 950 up to 1100
Size 5	over 1100 up to 1250
Size 6	over 1250 up to 1400

NOVAS

NOVAS DOOR CONTROLS

GEZE Hydraulic door closers are designed to suit various residential and commercial applications. By definition, door closers are used to close hinged leaf doors after they have been manually opened. The smooth closing operation is controlled by the adjustable hydraulic rack and pinion mechanism.

In choosing a closer style for a particular application consideration should be given to the type of door being controlled, frame condition, aesthetic and the control features required by the end user.

The size and weight of the door is the main consideration in selecting a closer of the correct strength. Recommended door widths for each closer assume normal operating conditions. If a door is of exceptional height, weight, special construction, or if air pressure differentials exist, a more powerful closer should be considered.

A door closer effectively increases the loading on door hinges and their rate of wear. It is recommended that any door fitted with a door closer should use three or more Novas Ball Bearing/Sintered Bearing Hinges.

It is essential that the door be clear in the door frame and when fitted with a lock the latch bolt must engage freely with the strike.

Floor or wall mounted doorstops should be fitted to prevent possible damage to the door frame and fitted hardware.

Services

Novas offers a fully comprehensive (free of charge) specification/door scheduling service to meet project requirements. Door schedules are prepared by our scheduling team who are all design and/or industry trained professionals. Please contact your local Novas representative for assistance.

Guarantee

Novas guarantee all their products against defects in workmanship and materials subject to inspection and confirmation of fair wear and tear within the normal working life of the product.

Novas assumes no liability for:

1. Improper installation or failure to follow fitting instructions.
2. Product failure due to improper maintenance or unfair wear and tear.
3. Indirect or consequential loss or damage.
4. Cost of removal and/or replacement.
5. Cost of freight and/or travelling expenses.
6. Some plated finishes are classified as soft finishes. Deterioration is possible under some climatic conditions and cannot be unconditionally guaranteed.

Contact your local Novas representative or agent for advice on all finishes.

