

# NOVAS

## Toilet Partition Fittings

### Ultima Series

#### About Ultima

- Ultima toilet partition fittings are a sophisticated, stylish and durable collection for prestigious projects.
- Ultima is ideally suited to prestige office and hotel environments where superior quality and design are demanded.
- Ultima is primarily manufactured from Stainless Steel (304 grade) for ultimate durability, strength and sanitation.
- Complies with Building Code of Australia F2.5(B) Construction of Sanitary Compartments (using Novas 350601).
- Architecturally designed with clean lines and modern curves to integrate with today's styling.



### Gravity Hinge

The Novas Gravity Hinge allows the door to be removed from outside the compartment in case of emergencies.

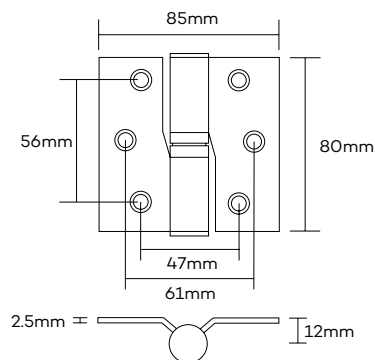
#### Gravity Hinge- Concealed

Product Code 370109L(LH, One Pair)  
370109R(RH, One Pair)

Fixing Screw Fix

Finish SSS, PSS

Description Concealed fixing with unique Stainless Steel cover plates. Quality Gravity Hinge manufactured in Stainless Steel (304 Grade). Features high wearing compound material for hinge connection.



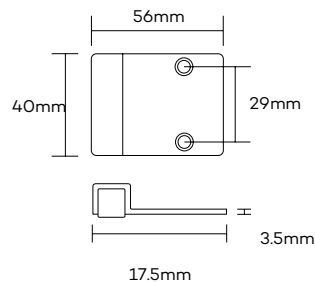
### Bumpers

Product Code 350201

Fixing Screw Fix

Finish SSS, PSS,

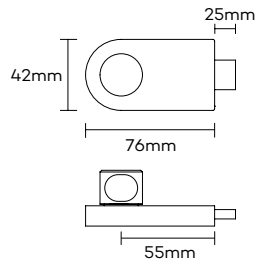
Description Stainless Steel (304 grade). Rubber stop insert. Supplied with mounting screws.



# NOVAS

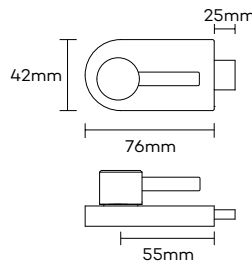
## Turnbolt

Product Code 370401  
Fixing Bolt Through  
Finish SSS, PSS  
Description Turnbolt with smooth latching action. Concealed bolt through fixture. Manufactured in Stainless Steel (304 grade)



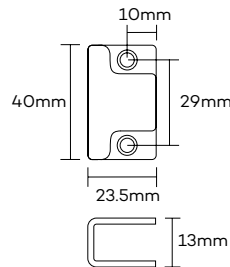
## Turnbolt-Ambulant

Product Code 370402  
Fixing Bolt Through  
Finish SSS, PSS  
Handed Left Hand, Right Hand  
Description Complies to AS 1428.1.2009 clause 16.3 Surface mounted and concealed fix  
Lift off staple for emergency access  
Manufactured in Stainless Steel (304 grade)



## Staple-U Shaped

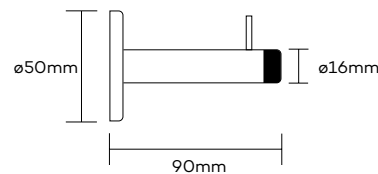
Product Code 350601  
Fixing Screw Fix  
Finish SSS, PSS  
Description Stainless Steel (304 grade).  
Supplied with mounting screws.  
Allows unrestricted lift-off of door in case of emergency.  
Heavy duty construction for commercial applications.



## Coat Hook - Door Stop

The Coat Hook and Toilet Roll Holder (refer accessories) are specifically designed allowing for individual or co-ordinated applications.

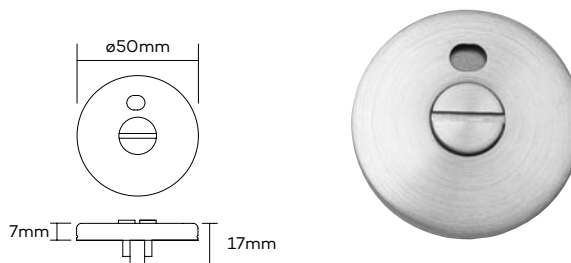
Product Code 350301  
Fixing Screw Fix  
Finish SSS, PSS  
Description Combination coat hook and door stop manufactured in Stainless Steel (304 grade). Features concealed screw mounting. Supplied with mounting screws.  
Ordering Note Supplied standard in complete set.



# NOVAS

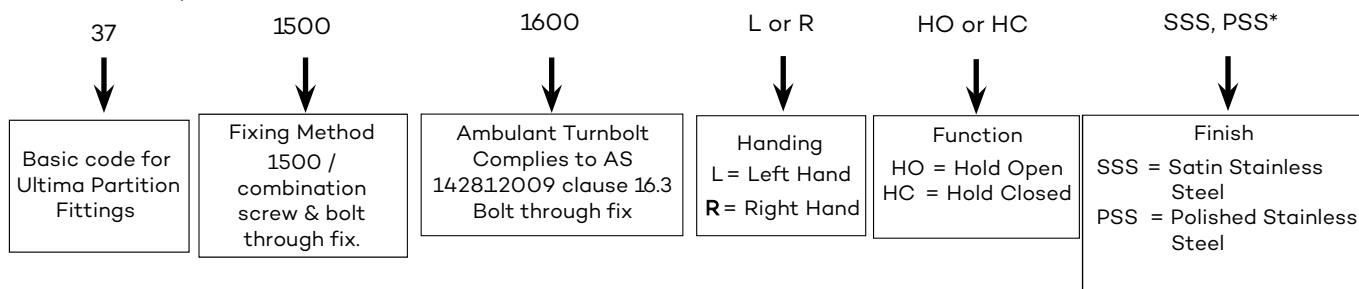
## Indicator - Circular

Product Code 370501  
Fixing Bolt Through  
Finish SSS, PSS  
Description Concealed stylish circular indicator that features bolt through fixing. Internationally recognised red/green indicator disc. Emergency release function. Manufactured in Stainless Steel (304 grade).



## Ordering Ultima Partition Sets

Complete sets comprise of 1 pair concealed Gravity Hinges, Indicator, Turnbolt, Staple, Bumper, Hat and Coat Hook (options available). To order the correct hinge function and product options follow the simple chart.



### Example

If you wanted to order a kit with screw fixing, SSS gravity hinge, left-hand, hold open, your ordering number would be: 371500LHOSSS

## Novas Toilet Partition Fittings

The fittings specifically designed to cater for all segments of the market. The toilet partition collections have earned a worldwide reputation for reliable high quality products, which have been installed throughout the UK, Middle East, Asia, New Zealand and Australia.

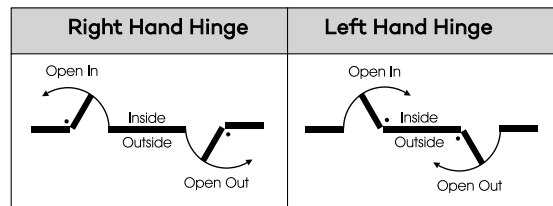
The design process backed by our team of engineers incorporates the key elements that drive the toilet partition market; aesthetics, durability, finish, cost competitiveness and ease of installation.

### Materials

Toilet Partition Fittings are manufactured from 304 grade Stainless Steel and Zinc Die Cast. Polished stainless steel and chrome plate are available upon request.

# NOVAS

## Hinge Handing



The hand of the hinge must be related to the direction the door opening and the side of the door on which the hinge knuckle is visible. Thus, a left hand door (open in) requires a left hand hinge. However, a left hand hinge is also required for a right hand reverse door (open out). Consequently the opposite applies for a right hand hinge (refer hinge handing above).

Always hand the hinge from the knuckle side of the door. eg. Hinges positioned to the left of the door, are left hand. Hinges positioned to the right of the door, are right hand.

---

## Guarantee

Novas Architectural guarantee all their products against defects in workmanship and materials subject to inspection and confirmation of fair wear and tear within the normal working life of the product.

Novas Architectural assumes no liability for:

1. Improper installation or failure to follow fitting instructions.
2. Product failure due to improper maintenance or unfair wear and tear.
3. Indirect or consequential loss or damage.
4. Cost of removal and/or replacement.
5. Cost of freight and/or travelling expenses.
6. Some plated finishes are classified as soft finishes. Deterioration is possible under some climatic conditions and cannot be unconditionally guaranteed.

**Consult your local Novas Architectural Representative or Agent for advice on all finishes.**